

HARDIMANS



6 Pickwick Drive
Blundeston, Lowestoft, NR32 5BX
Offers Over £460,000



6 Pickwick Drive, Blundeston, Lowestoft, Suffolk, NR32 5BX

The property comprises a particularly spacious 4 bedroomed executive property built by Messrs Badger Builders and is located on the edge of a small and sought after development in the highly desirable village of Blundeston. The property has the benefit of a spacious through lounge, separate dining room, utility and downstairs cloakroom. Upstairs you will find 4 good size bedrooms with a master suite having a dressing room and shower room.

The property offers fantastic scope to put your own mark on it and an early inspection is therefore highly recommended.

ENTRANCE DOOR TO

SPACIOUS ENTRANCE HALL

with radiator, laminate flooring, fitted cupboard, stained staircase to first floor with cupboard space under.

LOUNGE

with an attractive Victorian style fireplace, laminate flooring, 2 ornamental ceiling roses and coving, double doors to:-

DINING ROOM

with laminate flooring, serving hatch, sliding double glazed patio doors to rear garden, radiator.





KITCHEN

fitted in a range of base and wall units, single drainer one and a half bowl sink unit, drinking fountain, recess and plumbing for automatic dishwasher, Royal Blue Range Master with double oven and gas hobs, ornamental canopy over, radiator, tiled floor, ornamental beamed ceiling.

UTILITY ROOM

with a single drainer sink, range of base and wall cupboards, recess and plumbing for automatic washing machine, Ideal gas boiler heating domestic hot water and radiator heating system, radiator, door and window to rear garden.

DOWNSTAIRS CLOAKROOM

low level wc, washbasin, tiled floor.

SECOND RECEPTION ROOM/TV ROOM

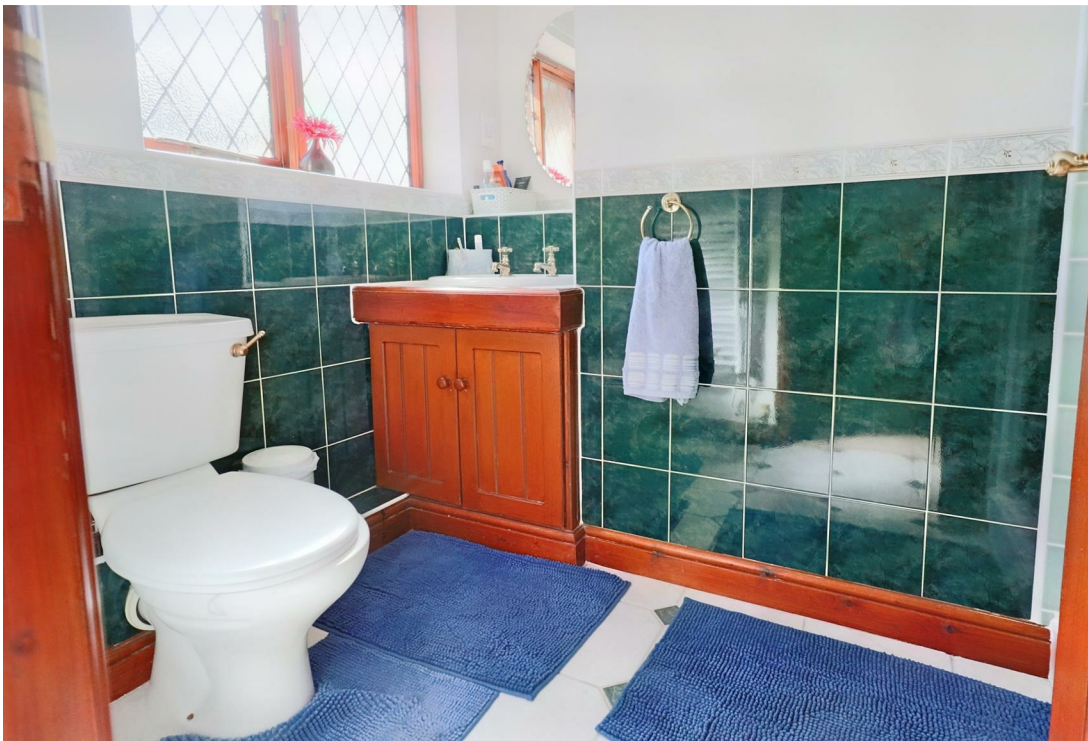
laminate flooring, radiator.

STAIRS TO FIRST FLOOR AND LANDING

built-in airing cupboard.

MASTER BEDROOM SUITE

large walk-in dressing room, with radiator, further large walk-in wardrobe cupboard, bedroom area with radiator.



EN SUITE SHOWER ROOM

shower cubicle with shower unit, vanity washbasin, low level wc, heated towel rail/radiator.



BEDROOM 2

with double built-in wardrobe cupboard, laminate flooring, radiator.

BEDROOM 3

double aspect windows, laminate flooring, radiator.

BEDROOM 4

with laminate flooring, radiator.



RECENTLY RE-FITTED SHOWER ROOM

double walk-in shower cubicle, thermostatic shower unit with overhead drencher, vanity washbasin, white high gloss cabinet, low level wc, modern style upright towel rail/radiator, extractor fan.



OUTSIDE

The property is situated on a good size corner plot, to the front lawned gardens enclosed by established conifer hedgerows, brick pavier pathway. To the rear, good size enclosed gardens laid to lawn with concrete posts and timber fencing, well stocked flower and shrub borders, paved patio and pathways. The property has a feature pavilion patio providing a lovely sheltered area for alfresco dining.



SINGLE GARAGE

of brick and tile construction with up and over personal door, additional private car standing with rear vehicular access.

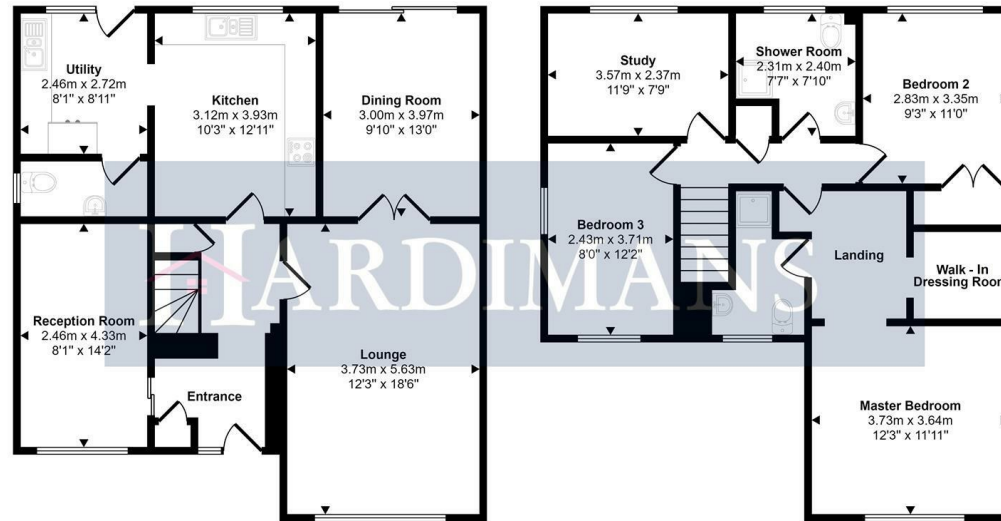
COUNCIL TAX BAND

E





Floor Plan



Ground Floor

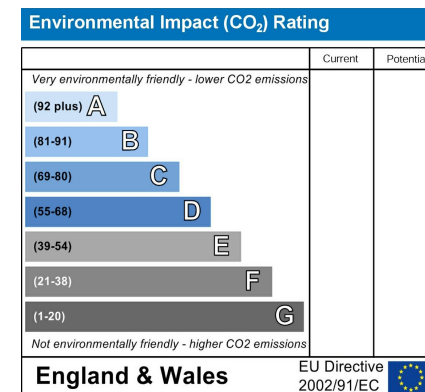
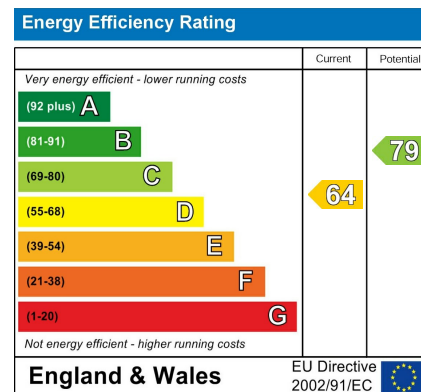
First Floor

This floorplan is only for illustrative purposes and is not to scale. Measurements of rooms, doors, windows, and any items are approximate and no responsibility is taken for any error, omission or mis-statement. Icons of items such as bathroom suites are representations only and may not look like the real items. Made with Made Snappy 360.

Area Map



Energy Efficiency Graph



Viewing

Please contact our Lowestoft Office on 01502 515999 if you wish to arrange a viewing appointment for this property or require further information.

These particulars, whilst believed to be accurate are set out as a general outline only for guidance and do not constitute any part of an offer or contract. Intending purchasers should not rely on them as statements of representation of fact, but must satisfy themselves by inspection or otherwise as to their accuracy. No person in this firm's employment has the authority to make or give any representation or warranty in respect of the property.



134 London Road North, Lowestoft, Suffolk NR32 1HB
Tel: 01502 515999
www.hardimans.co.uk E: info@hardimans.co.uk

